

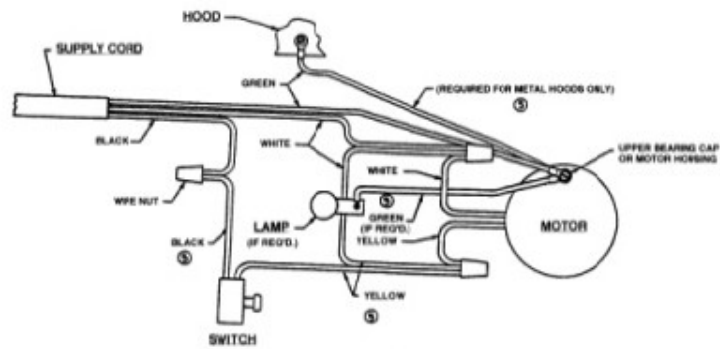
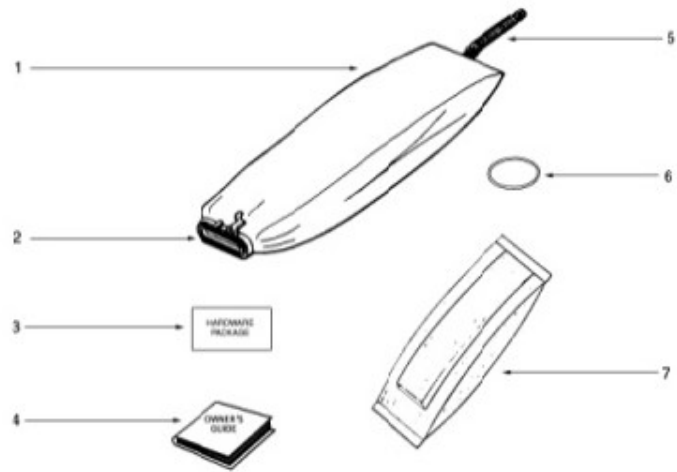


REPAIR PARTS LIST

Model

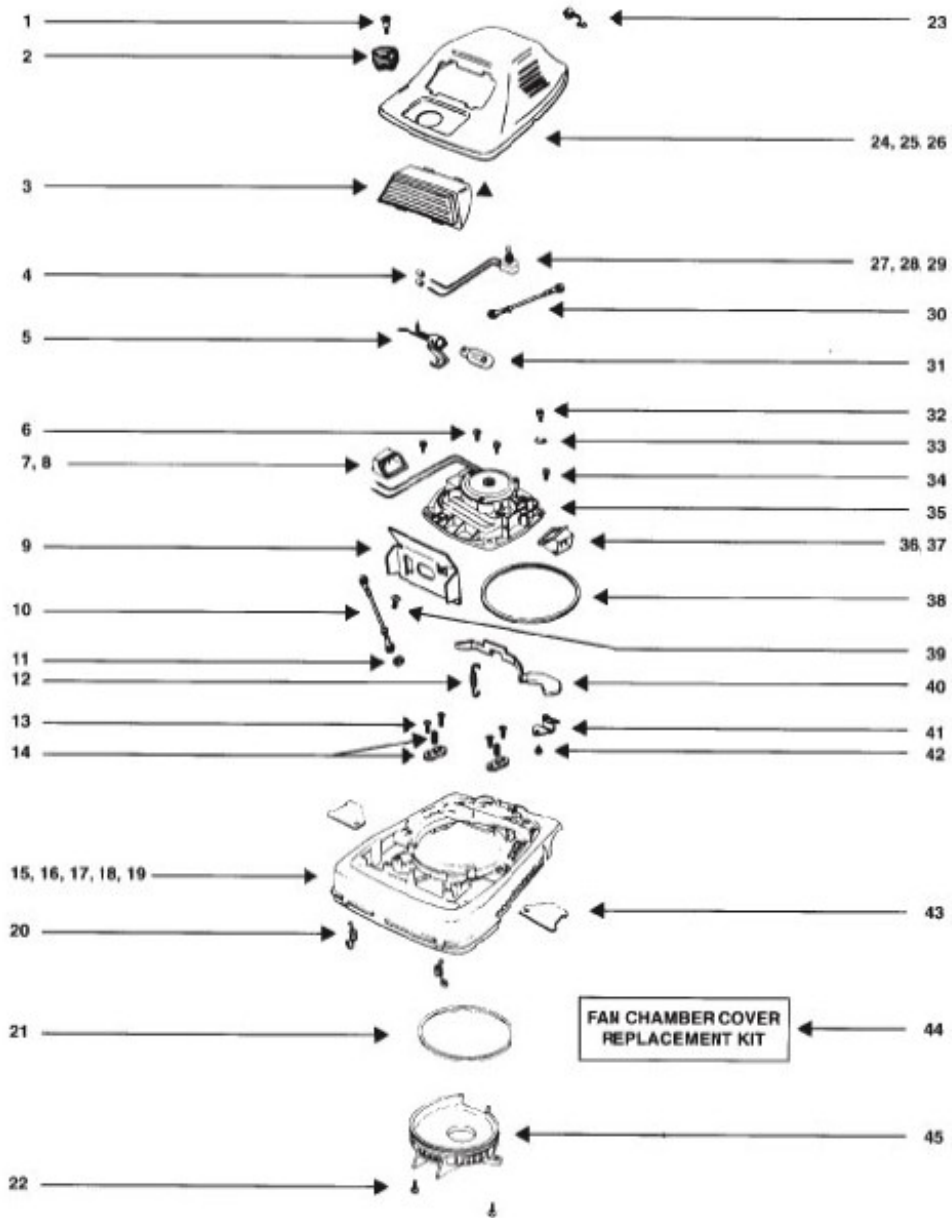
SC888K

Commercial Upright

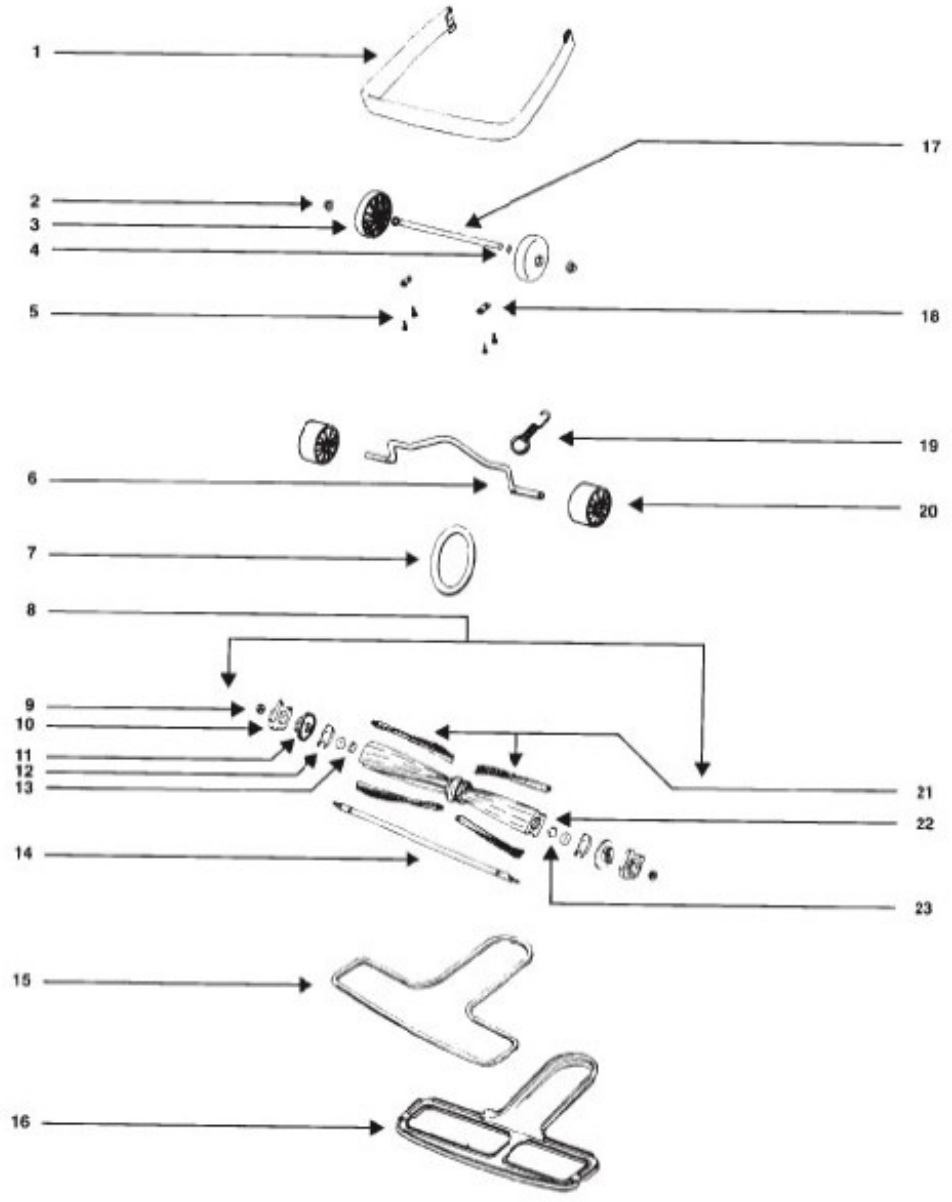


WIRING DIAGRAM
 Bag & Wiring - SC888K

Ref #	Part	Description	Comments	Qty
1	53469-23	ZIPPER BAG ASSY - PACKAGE		
2	77491	DIRT TUBE & OVERMOLD ASSE		
3	49461B-4SV	HARDWARE PKG - COMM UPRIG		
4	78091	OWNERS GUIDE		
5	47722	SPRING - BAG		
6	48410	SPRING - GARTER		
7	63213	UPR SYN ST DUSTBAG W/A&H		
	78221	ZIPPER HANDLE CHAIN ASSEM		

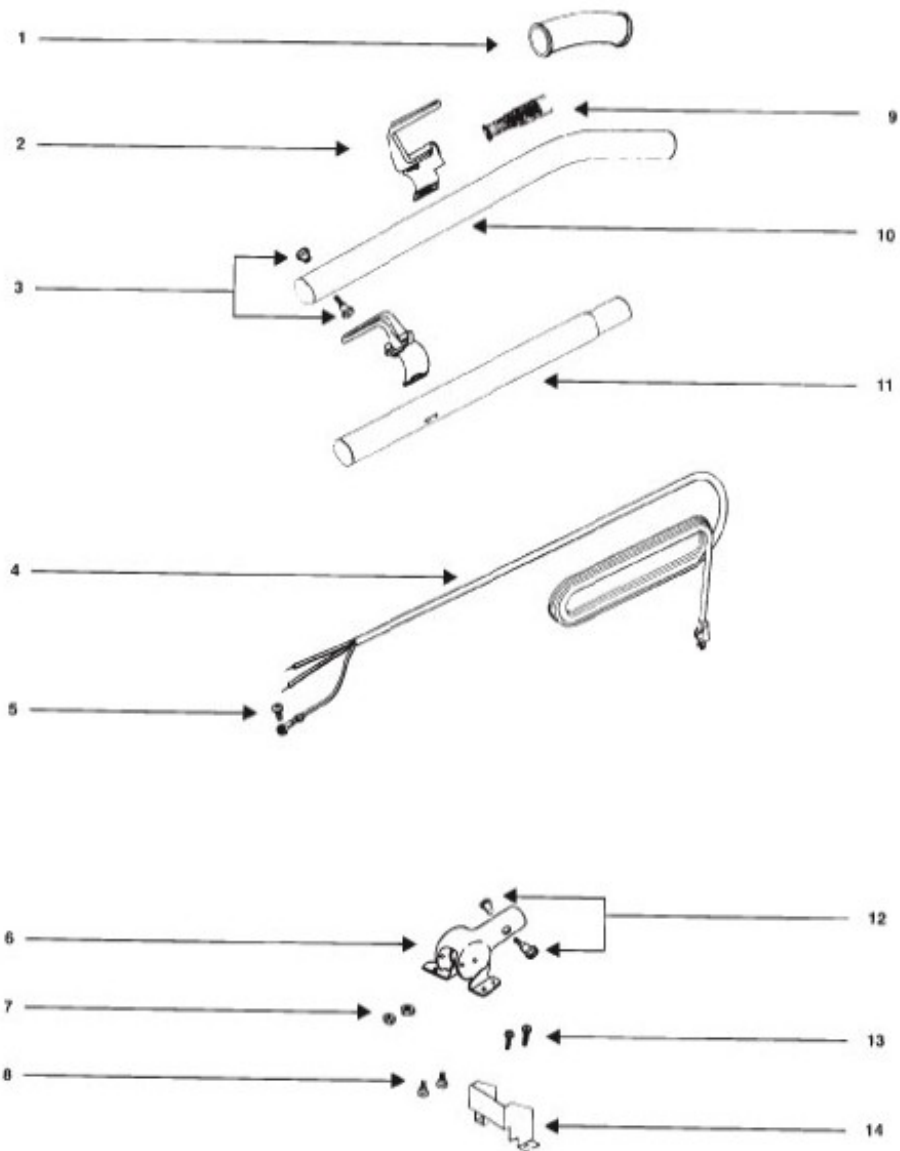


Ref #	Part	Description	Comments	Qty
1	53143	SCREW PACKAGE (10)	Pkg of 10	
2	26833-1	KNOB ASSEMBLY		
3		Not on this unit		
4	60192-1	WIRE SPLICE 5	Pkg of 5, 3 used.	
5		Not on this unit		
6	53238-14	SCREW PACKAGE	Pkg of 10, 3 used.	
7	56379-1SV	DUCT ASSEMBLY (R)	Includes item 8.	
8	49052-3	TAPE - FOAM		
9		Not on this unit		
10	55296	WIRE & TERMINAL ASSEMBLY		
11	53213-4	NUTS - PACKAGE 10	Pkg of 10, 1 used.	
12	53097	SPRING - FOOT PEDAL PKG (Pkg of 10, 1 used.	
13	53238-14	SCREW PACKAGE	Pkg of 10, 4 used.	
14	53140	CLAMP & SCREW ASSY PKG	Pkg of 6, 2 used.	
15	53474-8	BASE ASSEMBLY - CARTONED	Includes items 16,17,18 & 19.	
16	24964A-1	CAM (RIGHT)		
17	24965A-1	CAM (LEFT)		
18	53118	RIVET - SHOULDER PACKAGE		
19	53133	STL WASHERS-PKG (48495 (NLA)	Pkg of 10, 2 used.	
20	53117	SPRING - HOOD PACKAGE (10	Pkg of 10, 2 used.	
21	30517	GASKET - MOTOR SEAL		
22	53238-14	SCREW PACKAGE	Pkg of 10, 2 used.	
23	53122	STRAIN RELIEF BUSHING - P	Pkg of 10, 1 used.	
24	54097-2	HOOD & NAMEPLATE ASSY - P	Includes items 25 & 26	
25	37654	NAMEPLATE		
26	55754	DECAL (NLA)		
27	36409-13	SWITCH - PUSH		
28	53102	LOCKWASHER PACKAGE (10)	Pkg of 10, 1 used.	
29	55446	NUT - HEX		
30	54173-1	WIRE ASSY (GROUNDING)		
31		Not on this unit		
32	53228-2	SCREWS - PACKAGE 10		
33	53160	CABLE CLAMP PACKAGE	Pkg of 5, 1 used.	
34	53238-29	SCREW PACKAGE	Pkg of 10, 1 used.	
35	54352-16	MOTOR ASSEMBLY - PACKAGED		
36	56380-1SV	DUCT ASSEMBLY (L)	Includes item 37.	
37	49052-3	TAPE - FOAM		
38	30517	GASKET - MOTOR SEAL		
39	53228-2	SCREWS - PACKAGE 10		
40	24834A-3	PEDAL - FOOT (24834A-1		
41	37034	SPRING - ADAPT RETAINER		
42	53228-2	SCREWS - PACKAGE 10		
43	36263	COVER - WHEEL		
44	52334	FAN CHAMBER REPLACEMENT K	Includes items 21,22 & 45	
45	13770-1	COVER - FAN SCROLL		



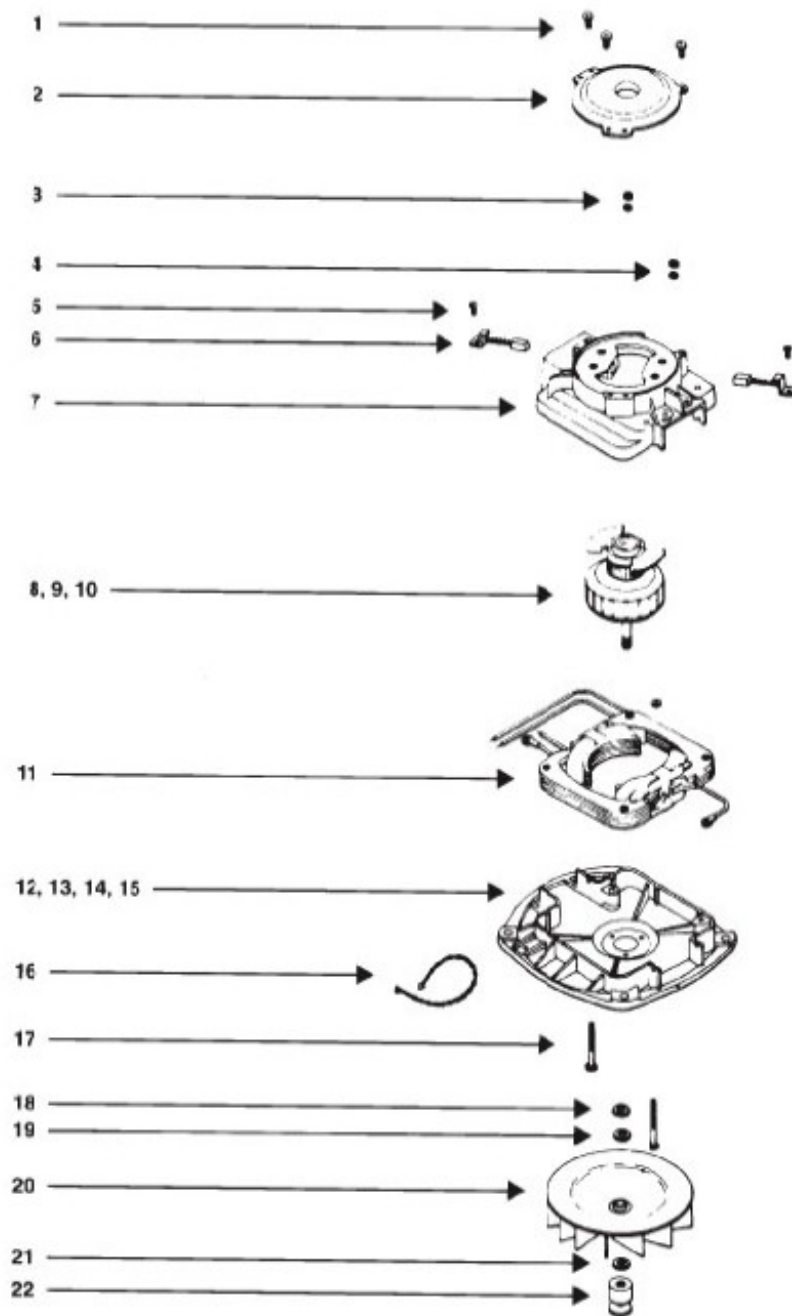
Furniture Guard & Brushroll - SC888K

Ref #	Part	Description	Comments	Qty
1	28504-1	GUARD - FURNITURE		
2	53121	PUSH NUT PACKAGE (10)		
3	26242-119N	WHEEL - REAR		
4	53110	WASHER - WHEEL PACKAGE (1	Pkg of 10, 2 used.	
5	53238-11	SCREW PACKAGE	Pkg of 10, 4 used.	
6	35947A	AXLE - FRONT		
7	52100B	BELT PKG ASSY (UPRIGHT)	Pkg of 2	
8	54555	DISTURBULATOR ASSY - CART	Includes items 9,10,11,12,13,14,21,22 & 23	
9	53158	LOCK NUT PACKAGE	Pkg of 10, 2 used.	
10	26059A	CAP - COVER		
11	26058A	CAP - DISTURBULATOR		
12	35728A-1	PLATE - COVER		
13	53114	BEARING - DISTURBULATOR P		
14	35663A	SHAFT - DISTURBULATOR		
15	46538	TAPE-FOAM (use 46538-4)		
16	25922-1	BOTTOM PLATE ASSEMBLY	Includes item 15.	
	60161	WHEEL & AXLE ASSY	Includes items 2,3,4 & 17	
17	37183	AXLE - REAR		
18	53201	AXLE CLAMP - PACKAGED		
19	53076-2	SPRING & AXLE PACKAGE (6)	Pkg of 6, 1 used.	
20	35859A-1	WHEEL - FRONT		
21	52140-1	PACKAGED - BRISTLE STRIP		
23	53115	PACKAGE - TOLERANCE RING	Pkg of 10, 2 used.	



Handle - SC888K

Ref #	Part	Description	Comments	Qty
1	35293-22	GRIP - HANDLE		
2	53574-5	CORD RETAINER SET		
3	53198-1	HANDLE SCREW ASSY PACKAGE	Pkg of 6, 1 used.	
4	52370-18	CORD & TERMINAL ASSY 50'1		
5	62082-1	SCREW PACKAGE	Pkg of 10, 1 used.	
6	38183-1SV	HANDLE SOCKET ASSEMBLY		
7	53213-5	NUTS - PACKAGE 10	Pkg of 10, 2 used.	
8	53145	BOLT PACKAGE (10)	Pkg of 10, 2 used.	
9	53077	SPRING - STRAIN RELIEF PK	Pkg of 5	
10	25329-44SV	HANDLE ASSEMBLY (UPPER)	Includes item 1.	
11	12637-8	TUBE - HANDLE (LOWER)		
12	53198-1	HANDLE SCREW ASSY PACKAGE	Pkg of 6, 1 used.	
13	53238-29	SCREW PACKAGE	Pkg of 10, 2 used.	
14	36439	SHIELD - HANDLE SOCKET		



Ref #	Part	Description	Comments	Qty
	54352-16	MOTOR ASSEMBLY - PACKAGED		
6	UAU-000000-00K03	MOTOR BRUSH ASSEMBLY		
18	53188-2	WASHER PACKAGE		
19	53148-1	WASHER - FAN PACKAGE (10)		
20	UAU-000000-00K02	FAN BLOWER - MOTOR		
21	53148-1	WASHER - FAN PACKAGE (10)		
22	UAU-000000-00K06	PULLEY - MOTOR		